

HS-2600FT-O SERIES



Materials



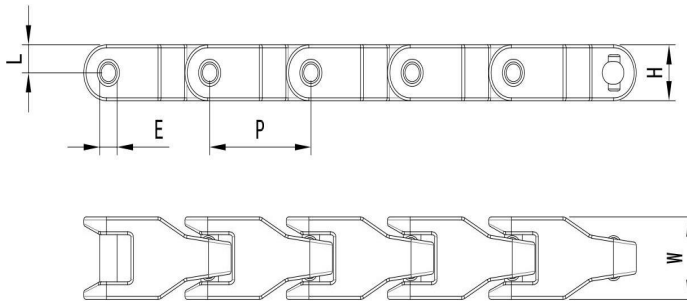
Sprockets



Applications

Plate Materials: POM-DP, POM-LF

Pin Material: Cold rolled austenitic stainless steel



Dimension	mm	inches
P	63.5	2.480
M	23.3	0.917
W	42.0	1.654
H	28.5	1.122
E	11.0	0.433
L	14.3	0.563

HS-2600FT-O (Side Flexing Case Conveyor Chains)

CHARACTERISTICS

	Width W		Working Load		Radius		Reverse Radius		Weight (kg/m)
	(mm)	(inch)	N(21°C)	lbs(21°C)	(mm)	(inch)	(mm)	(inch)	
HS-2600FT-O	42.0	1.66	6000	1349	600	23.62	75	2.95	1.50