

HS-821-EL SERIES



Materials



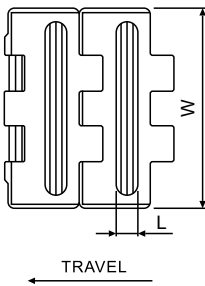
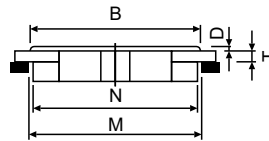
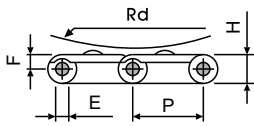
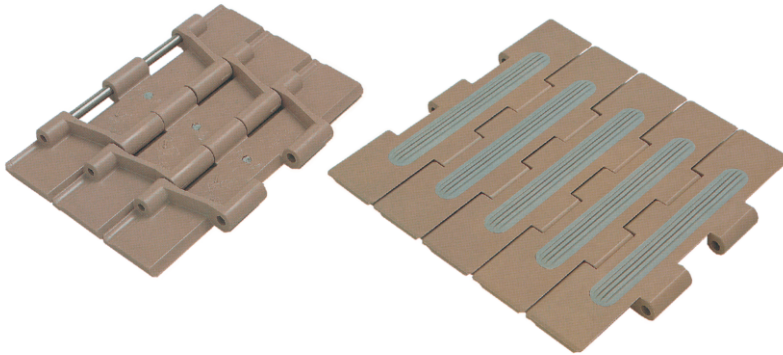
Sprockets



Applications

Plate Materials: POM-DP,POM-LF

Pin Material: Cold rolled austenitic stainless steel



Dimension	mm	inches
P	38.1	1.500
W	-	-
E	6.4	0.250
T	4.8	0.189
F	7.9	0.311
M	140.0	5.512
N	136.5	5.374
D	2.0	0.079
L	10.0	0.394
H	14.3	0.563
RD	40.0	1.575

B:132. 0/195. 0/245. 0

HS-821-EL (Straight Running Plastic Chain)

CHARACTERISTICS

	Width W		Working Load		Radius		Reverse Radius		Weight (kg/m)
	(mm)	(inch)	N(21°C)	lbs(21°C)	(mm)	(inch)	(mm)	(inch)	
HS-821-K750-EL	190.5	7.50	2680	603	-	-	40	1.575	2.50
HS-821-K1000-EL	254.0	10.00	2680	603	-	-	40	1.575	2.95
HS-821-K1200-EL	304.8	12.00	2680	603	-	-	40	1.575	3.25