

## HS-821 SERIES



Materials



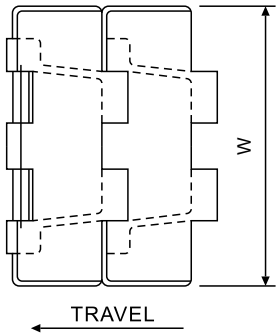
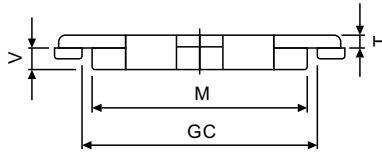
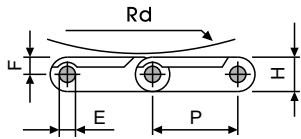
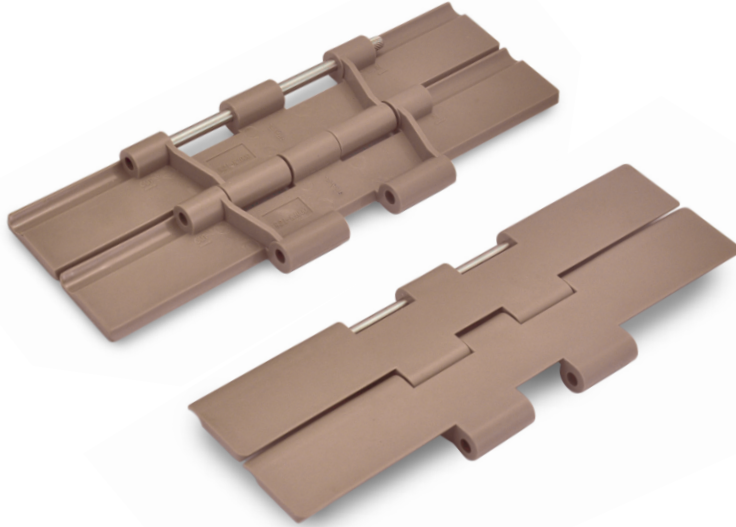
Sprockets



Applications

**Plate Materials:** POM-DP, POM-LF

**Pin Material:** Cold rolled austenitic stainless steel



Dimension	mm	inches
P	38.1	1.500
W	—	—
H	14.3	0.563
T	4.8	0.189
E	7.9	0.311
M	136.5	5.374
F	7.9	0.311
V	13.0	0.512
RD	50.0	1.970
GC	140.0	5.512

### HS-821 (Straight Running Plastic Chain)

#### CHARACTERISTICS

	Width W		Working Load		Radius		Reverse Radius		Weight (kg/m)
	(mm)	(inch)	N(21°C)	lbs(21°C)	(mm)	(inch)	(mm)	(inch)	
HS-821-K750	190.5	7.50	2680	603	—	—	50	1.97	2.50
HS-821-K1000	254.0	10.00	2680	603	—	—	50	1.97	2.95
HS-821-K1200	304.8	12.00	2680	603	—	—	50	1.97	3.25