

HS-828 SERIES



Materials



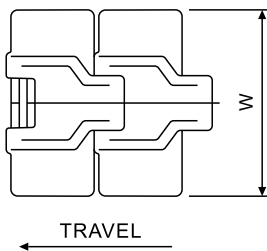
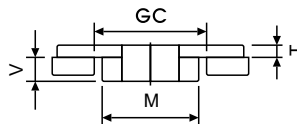
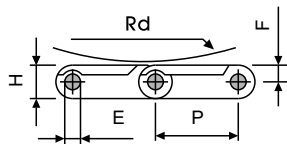
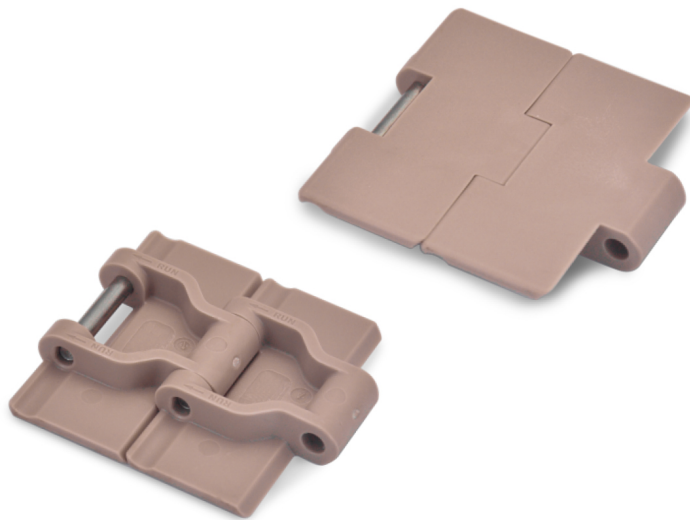
Sprockets



Applications

Plate Materials: POM-DP, POM-LF

Pin Material: Cold rolled austenitic stainless steel



Dimension	mm	inches
P	38.1	1.500
W	-	-
H	15.0	0.590
T	4.0	0.157
E	6.4	0.252
M	42.1	1.657
F	7.5	0.295
V	11.0	0.433
RD	50.0	1.969
GC	44.0	1.732

HS-828 (Straight Running Plastic Chain)

CHARACTERISTICS

	Width W		Working Load		Radius		Reverse Radius		Weight (kg/m)
	(mm)	(inch)	N(21°C)	lbs(21°C)	(mm)	(inch)	(mm)	(inch)	
HS-828-K325	82.6	3.25	2000	450	-	-	40	1.575	1.05
HS-828-K330	83.8	3.30	2000	450	-	-	40	1.575	1.08