

HS-880TAB SERIES



Materials



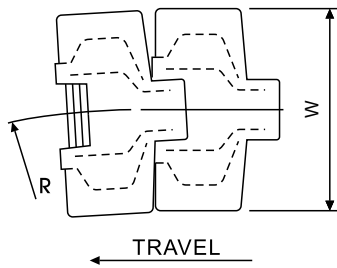
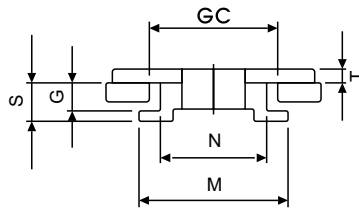
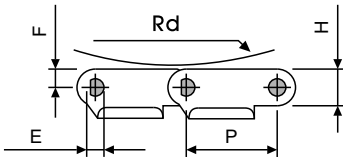
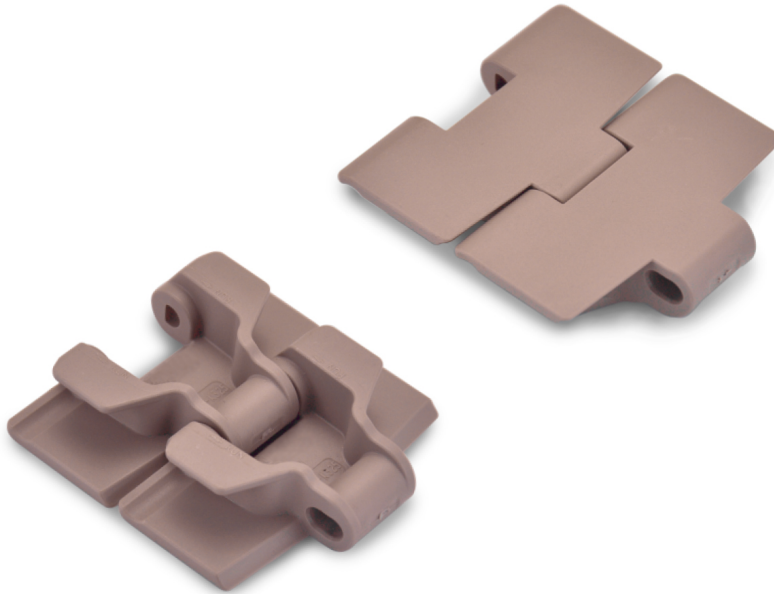
Sprockets



Applications

Plate Materials: POM-DP, POM-LF

Pin Material: Cold rolled austenitic stainless steel



| Dimension | mm | inches |
|--------------|-------|--------|
| P | 38.1 | 1.500 |
| R | 400.0 | 15.748 |
| W | - | - |
| H | 20.0 | 0.787 |
| T | 4.0 | 0.157 |
| F | 7.6 | 0.300 |
| E | 7.1 | 0.280 |
| M | 61.1 | 2.406 |
| N | 42.9 | 1.689 |
| S | 16.0 | 0.630 |
| G | 11.5 | 0.453 |
| RD | 40.0 | 1.575 |
| GC(Straight) | 46.0 | 1.811 |
| GC(Curve) | 44.2 | 1.740 |

HS-880TAB (Side Flexing Plastic Chain)

CHARACTERISTICS

| | Width W | | Working Load | | Radius | | Reverse Radius | | Weight (kg/m) |
|----------------|---------|--------|--------------|-----------|--------|--------|----------------|--------|---------------|
| | (mm) | (inch) | N(21°C) | lbs(21°C) | (mm) | (inch) | (mm) | (inch) | |
| HS-880TAB-K325 | 82.5 | 3.25 | 2100 | 472 | 457 | 18.00 | 40 | 1.57 | 0.94 |
| HS-880TAB-K450 | 114.5 | 4.50 | 2100 | 472 | 500 | 19.69 | 40 | 1.57 | 1.08 |
| HS-880TAB-K600 | 152.4 | 6.00 | 2100 | 472 | 560 | 22.05 | 40 | 1.57 | 1.32 |
| HS-880TAB-K750 | 190.5 | 7.50 | 2100 | 472 | 610 | 24.00 | 40 | 1.57 | 1.35 |